



For Sale!

**Sony XBR-55X800G
4K UHD LED TV**

Parts Only!

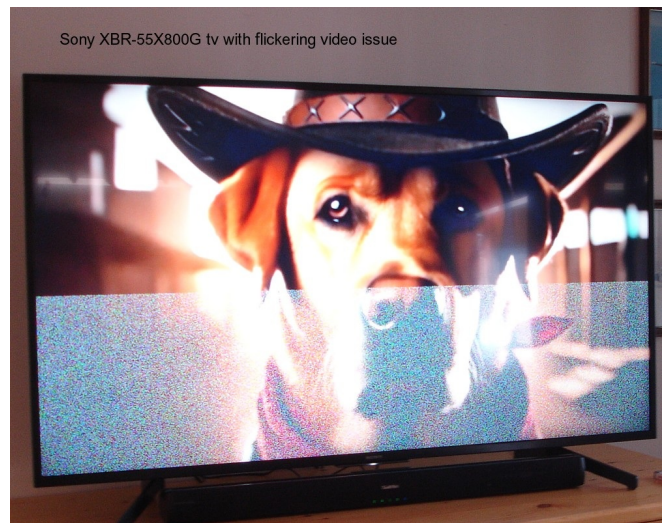
**Parts for a
Sony XBR-55800G
4K UHD LED TV!**

Note: While a very popular brand and model, **parts are extremely limited and model specific!** So, if you own one of these, you may wish to invest in a few extra parts now. Here is your chance.

All Parts Working - except the video suffers occasionally from a flickering, raster-like horizontal bar covering the lower two-thirds of the screen first thing in the morning! After it warms up, the picture and all functions are normal.

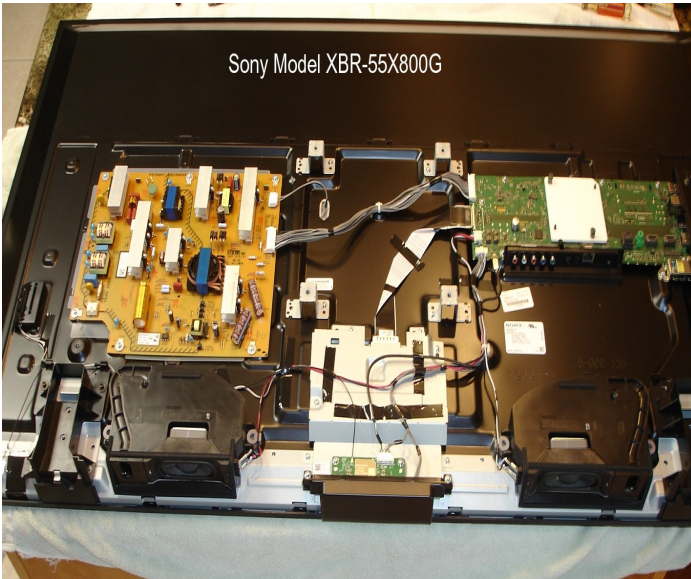
Researching on line, there were many videos showing the cause is generally a malfunctioning 'T-con' board that controls the video signal.

However, my particular television does NOT have a 'T-con' board. So, I reasoned that I needed a new main circuit board - and the beginning of my story ...



Reportedly, three Sony models, the XBR-75X800G, the XBR-65X800G, and the XBR-55X800G (mine), representing their 75", 65", and 55" models, share the same model main circuit board, the Sony A5000970A. Well, maybe...

Here is a picture of the internal situation:



I called the Sony Service Center; they had me try the Reset Procedures - but no affect. They gave up quickly with little else to suggest, but said I should take it to a service center for repair! The nearest one is only about 6 hours away in the middle of Tennessee!

So, that leaves me with few options.

Repair by a shop will quickly exceed the price of a new television and may take weeks, and it may actually be the screen!

Since we loved this Sony model, we tried locating another. No dice. They are indeed long gone, except for a refurbished model from Amazon for twice the original price!

We tried a new model from Sony, but quickly returned it after finding many issues that we could not accept. Now we have a new LG model that appears to fit our needs, but that is a story for another day.

Conclusion

We feel that our Sony television is an earlier odd-ball and that the main boards advertised for this model are probably programmed for use with the much more popular 'T-con' equipped TVs. It is the only explanation we can think of.

Which makes our television VERY unique. I would hate to just throw these parts away.

Please contact us if you have an old Sony XBR-55X800G and wish to sell its parts.

Otherwise, we offer to sell our own parts for this Sony XBR-55X800G model for just over the cost of shipping. We have our existing Sony parts and also the brand new A5000970A main board that would most certainly work for the models with a 'T-con' board.

More pictures are available, if you wish.

If you have any questions or comments, please email me at: z100lifeline@swvagts.com

Cheers,

Steven W. Vagts



The left yellow board is the power supply, the right long green board is the main board of concern, and the 'T-con' board of many of these models fits between these two boards with the input from the main board via flat ribbon cable and the output via two broad flat ribbon cables going to the screen input below.

These 'T-con' boards are available all over the used market for less than \$50.00. But as I already showed - not used in my model. So, I reasoned, the culprit is probably the main circuit board.

I quickly ordered a used main board from a Sony XBR-75X800G model from Ebay - about \$100.

It was in excellent condition, well packed and it had all the same model numbers as my original - including the silk-screened numbers on the board - an exact replacement! Yeah!

I quickly installed it the same day and powered up. The television did nothing but blink a red, white, and green LED at the bottom center of its base and played a nice default Sony tune from the speakers - was it mocking me?

I quickly returned it to the seller via Ebay and ordered another new one, this time from a Sony XBR-65X800G and another seller. Again, it came quickly, was well packed, and it appeared new.

Again, I installed it upon receipt and... the same results! This time I contacted the seller by Email via Ebay and they suggested I try doing a Firmware update. I followed all the procedures, which were fairly simple, but when I plugged the flash drive into the television's USB port - nothing happened.

Further emails to the seller could offer no further help, except they did suspect the initial video symptoms point to probably a screen issue instead of the main board; but that would not explain the fact that the new board would not work, while the old one does!